



Arlington, Woodside Park, N12 7JR

Per Calendar Month £4,000 Per Calendar Month Council Tax Band G

**REAL ESTATES**  
Est. 1981

Estate Agents · Residential Sales · Investments · Lettings

**\* AVAILABLE NOW \* UNFURNISHED \* A 4 BEDROOM DETACHED** family home in the heart of Woodside Park and within the catchment for Woodridge Primary School. Woodside Park and West Finchley Northern Line tube stations are close by.

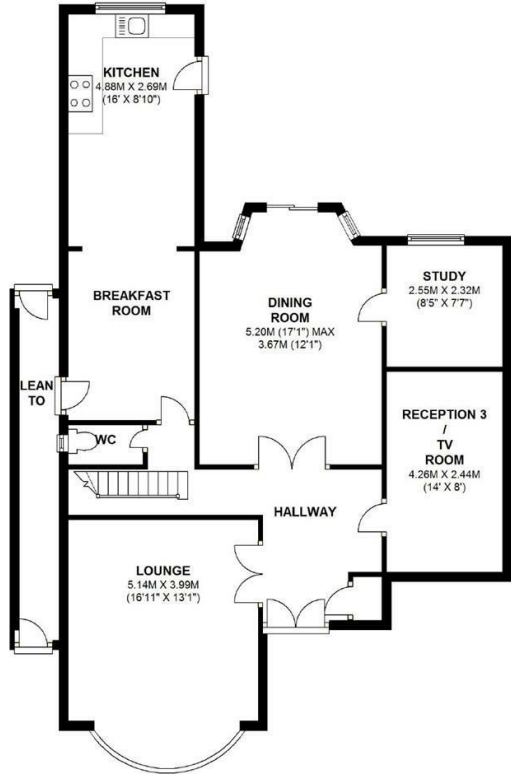
The generous living accommodation comprises lounge, dining room, fitted kitchen/breakfast room, study and tv room to the ground floor. There are 4 bedrooms and 2 bathrooms (1 en suite) to the 1st floor.

The rear garden extends to approx 80' and the front provides off street parking for 2-3 cars.

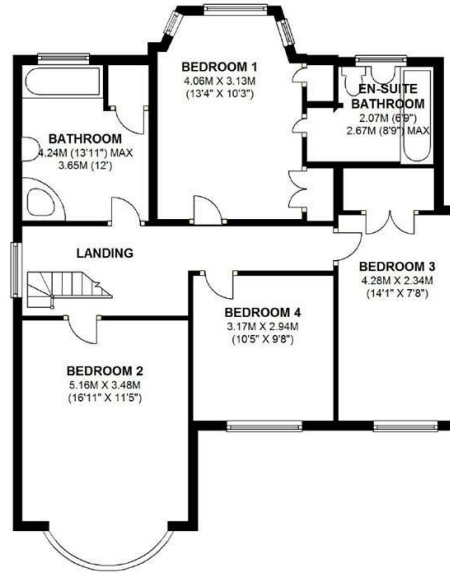




**GROUND FLOOR**  
APPROX. 100.0 SQ. METRES (1076.0 SQ. FEET)



**FIRST FLOOR**  
APPROX. 83.0 SQ. METRES (893.3 SQ. FEET)



TOTAL AREA: APPROX. 175.6 SQ. METRES (1890.3 SQ. FEET)

Energy Efficiency Rating		Current	Potential
Very energy efficient - lower running costs	A		
Energy efficient - lower running costs	B		83
Decent energy efficiency - lower running costs	C		62
Some energy efficiency - lower running costs	D		
Not very energy efficient - higher running costs	E		
Very poor energy efficiency - higher running costs	F		
Least energy efficient - higher running costs	G		

EU Directive

